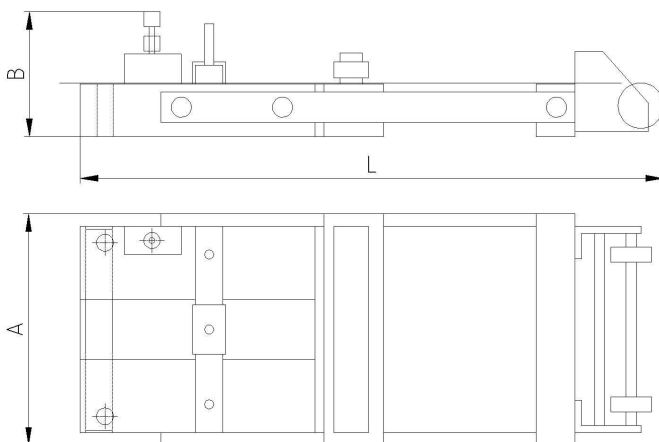


- Compact, user-friendly unit, which may be used in many ways
- Air intake valve controlled by ram
- Opening and closing of the fixed and mobile grippers through actuation of the control valve
- Stroke adjustment through shifting of the stop block on slide guides and through stop screw

## RANGE AND FEATURES

Model	Width (mm)	Feed length (mm)	Thickness (mm)		Weight (kg)
			Min.	Max.	
1623 AX 2	38.1	50.8	0.1	1.2	3.5
1623 AX 4	38.1	101.6	0.1	1.1	4
1623 AX 6	38.1	152.4	0.1	1.0	5
1623 CX 3	76.2	76.2	0.1	2.0	9
1623 CX 6	76.2	152.4	0.1	1.9	11
1623 CX 9	76.2	228.6	0.1	1.8	13
1623 CX 12	76.2	304.8	0.1	1.7	14.5
1623 DX 4	101.6	101.6	0.1	1.9	11
1623 DX 6	101.6	152.4	0.1	1.8	13.5
1623 DX 12	101.6	304.8	0.1	1.7	17
1623 FX 4	152.4	101.6	0.1	2.1	18
1623 FX 6	152.4	152.4	0.1	2.0	19
1623 FX 9	152.4	228.6	0.1	1.9	20
1623 FX 12	152.4	304.8	0.1	1.8	23
1623 HX 4	225.0	101.6	0.1	1.9	25
1623 HX 6	225.0	152.4	0.1	1.8	27
1623 HX 9	225.0	228.6	0.1	1.7	29.5
1623 HX 12	225.0	304.8	0.1	1.5	32
1623 LX 6	304.8	152.4	0.1	2.3	59
1623 LX 12	304.8	304.8	0.1	2.0	70

## DIMENSIONS



Model	L	A	B
1623 AX 2	318	92	90
1623 AX 4	419	92	90
1623 AX 6	521	92	90
1623 CX 3	391	165	117
1623 CX 6	544	165	117
1623 CX 9	696	165	117
1623 CX 12	889	165	117
1623 DX 4	451	197	117
1623 DX 6	553	197	117
1623 DX 12	857	197	117
1623 FX 4	518	248	124
1623 FX 6	569	248	124
1623 FX 9	721	248	124
1623 FX 12	874	248	124
1623 HX 4	518	329	124
1623 HX 6	569	329	124
1623 HX 9	721	329	124
1623 HX 12	874	329	124
1623 LX 6	628	425	131
1623 LX 12	933	425	131