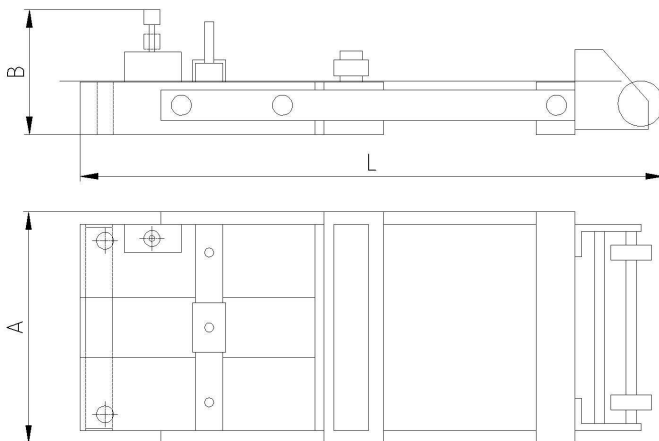


- Compact, user-friendly unit, which may be used in many ways
- Fixed and mobile grippers pneumatically activated
- Electrovalve allowing to drive electrically the cycle
- Electro-pneumatic opening of fix clip to make the strip free during driving
- Adjustment of stroke by movement of stopping bloc on slides and by locking screw

RANGE AND FEATURES

Model	Width (mm)	Feed length (mm)	Thickness (mm)		Rate (cp/min)
			Min.	Max.	
1623 L6	304.8	0 à 152.4	0.1	3.25	85
1623 L12	304.8	0 à 304.8	0.1	3.25	65

DIMENSIONS



Model	L	A	B
1623 L6	692	413	229
1623 L12	997	413	229